



QUALITY REPORT :



PCB LeAliShop_Service offered by_ Esseti Circuiti Stampati

Via del lavoro, 90 - 40050 Argelato (BO) www.esseticircuiti.it Tel.051.892362 - Fax.051.893972

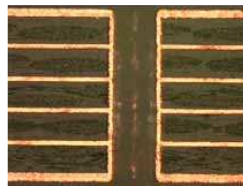
ARC.	COSTUMER NAME	OL	WEEK	N°SAMPLE	N° LAYERS	DATE:
21900	XXXX	1000	2	1	6	10/01/2014

WE CERTIFY THAT THE PCB'S LISTED ABOVE HAVE BEEN MANUFACTURED, INSPECTED, TESTED AND PACKAGED IN ACCORDANCE WITH THE CURRENT APPLICABLE CUSTOMER DRAWINGS AND SPECIFICATIONS. THE APPROPRIATE INSPECTION AND TEST RECORDS ARE AVAILABLE FOR REVUIW UPON REQUEST.

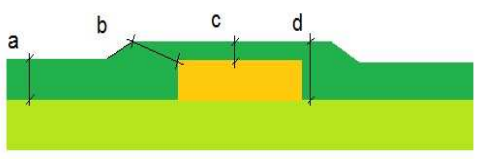
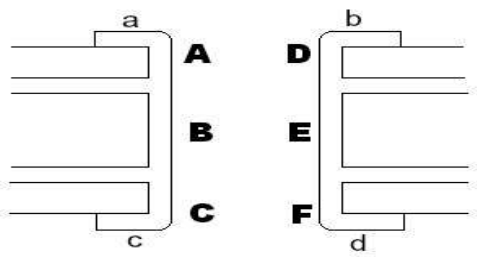
UL FILE : ZPMV2.E134044

100% ELECTRICAL TEST: PASSED

1) METALLOGRAPHIC SECTION PHOTO:



	IPC	DESCRIPTION	ACC.	REJ.
METALLOGRAPHIC SECTION CONTROL	<i>N° 1 METALLOGRAPHIC SECTION AND THERMAL STRESS REPORT __ 3CYCLE - TEMPERATURE 288+/-5 °C</i>			
	3.2.1	ETCHING	Acc.	
	3.1.8	RESIN RECESSION	Acc.	
	3.3.3 - 3.3.12	POST SEPARATION	Acc.	
	3.3.5 - 3.3.6	PLATING CRACK: barrel cracking / corner cracking	Acc.	
	2.9.8	DRILL	Acc.	
	3.3.7 - 3.5.1	NODULE	Acc.	
		SMEARING	Acc.	
	3.3.9	PLATING VOIDS	Acc.	

Soldermask Thickness					
		Request	Actual	Acc.	Rej.
	a	$40 > a > 8$	31.5	Acc.	
	b	$25 > b > 8$	18.5	Acc.	
	c	$25 > c > 8$	16.9	Acc.	
	d	$60 > d > 8$	52.3	Acc.	
Copper Thickness Measurement :					
<p><u>Microsection Photo:</u></p> <p>Checking Hole : $\varnothing 0.2$ mm</p> <p>Instrument:</p> <p>Microscope Scale Factor: 200X</p> <p>Instrument : Vision Dynascope Stereo "LYNX"</p>					
		Request (um)	Actual (um)	Acc.	Rej.
	A	≥ 20	29.5	Acc.	
	B	≥ 20	25.6	Acc.	
	C	≥ 20	27.9	Acc.	
	D	≥ 20	28.9	Acc.	
	E	≥ 20	26.1	Acc.	
	F	≥ 20	29.1	Acc.	
	a	≥ 35	39.2	Acc.	
	b	≥ 35	40.2	Acc.	
	c	≥ 35	38.9	Acc.	
	d	≥ 35	41.5	Acc.	

DATE: 10/01/2014

SIGNATURE: Esseti Circuiti Stampati